



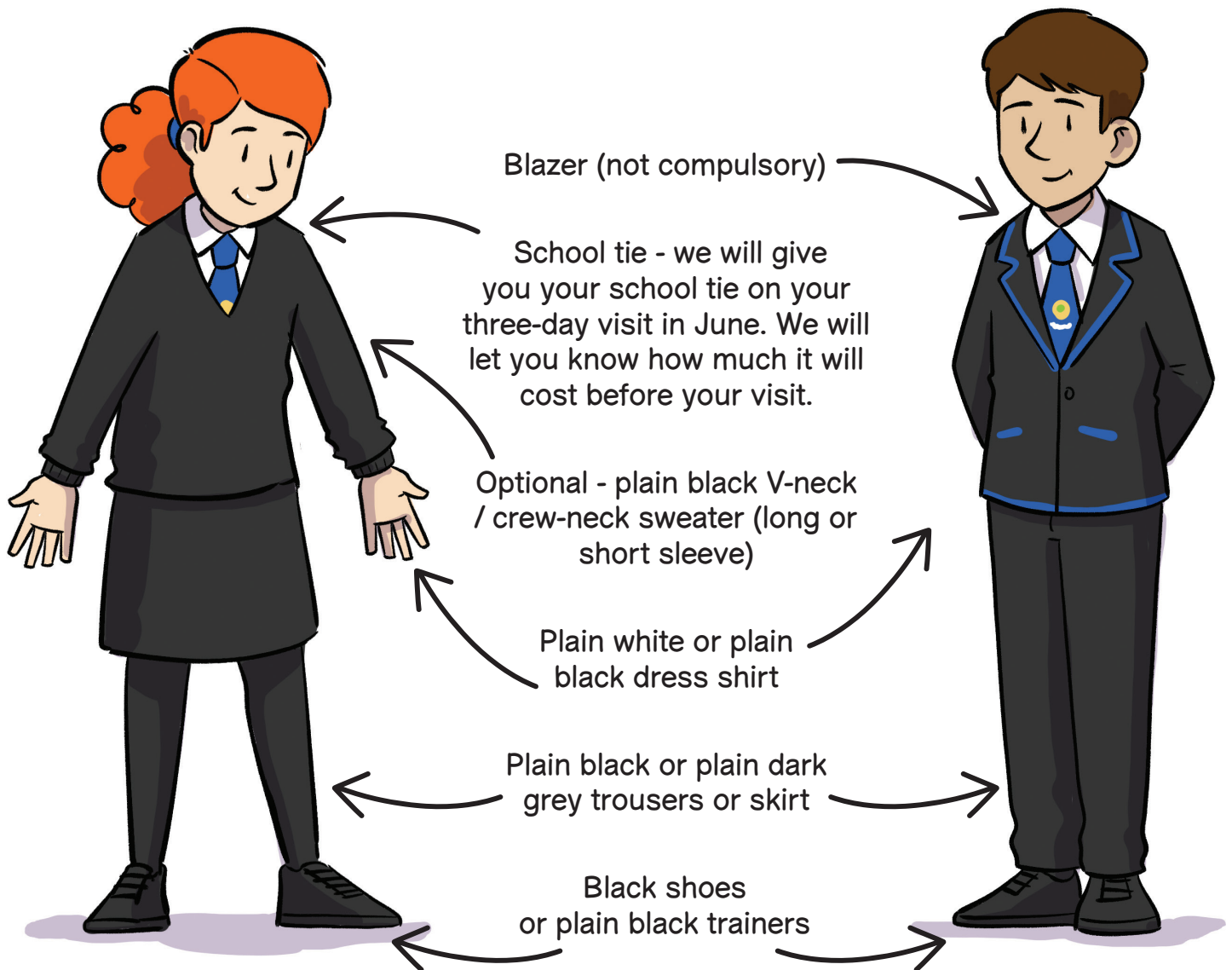
Welcome to Linlithgow Academy



We know you will have lots of questions about joining. Here is your complete guide to starting at Linlithgow Academy. It includes all the information you will need to settle in quickly and happily.

What happens on my first day?

You will need to wear the correct uniform from your first day. Our uniform is smart and helps you feel that you belong to Linlithgow Academy.



You will also need to bring the following equipment for your lessons in a strong backpack:

- Pen • Pencil • Ruler • Rubber • Sharpener • Timetable • Packed lunch (if applicable)
- PE kit (on PE days), which is as follows:
 - Indoor kit - black or white T-shirt, shorts, socks, non-marking trainers and, if applicable, swimming costume, trunks, goggles and towel.
 - Outdoor kit - suitable footwear, shorts, tracksuit bottoms in winter, black or white T-shirt, fleece or light jacket (optional) and towel.

Getting to school

It is also important to arrive at school on time every day.

If you are coming by free bus, we will give you a timetable and bus pass (to any eligible pupils) during the summer holidays.

Key tips from pupils

We are all very friendly and welcoming at Linlithgow Academy. We can all remember coming to secondary school for the first time, and how exciting but daunting it was.

Our current S1 pupils have got lots of advice for you about how to settle in as quickly and happily as possible:

Remember to pack your bag the night before!

Make sure you have the correct uniform.

The food is amazing at the academy.

Check how you will get to school, before your first day.

Pizzinis are so tasty!

Thursday is the best day for lunch – it's Chinese!

The building may be big, but you will soon get to know your way around it.

The thought might be a little scary, but it will be fine!

Don't worry about getting lost, it happens to everyone!

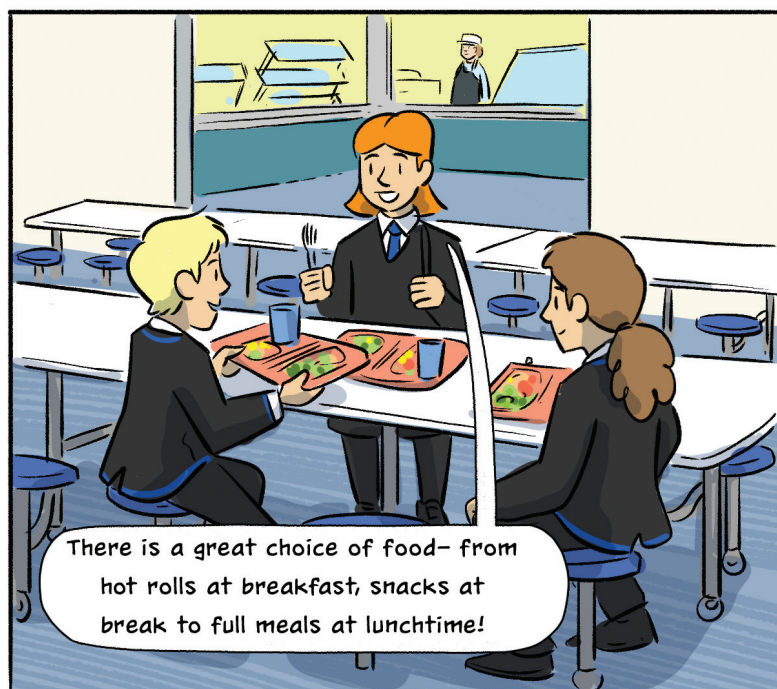
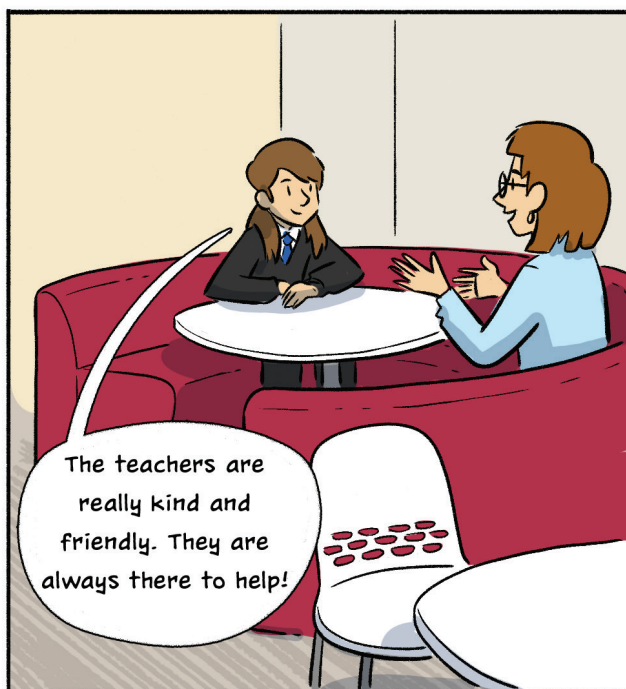
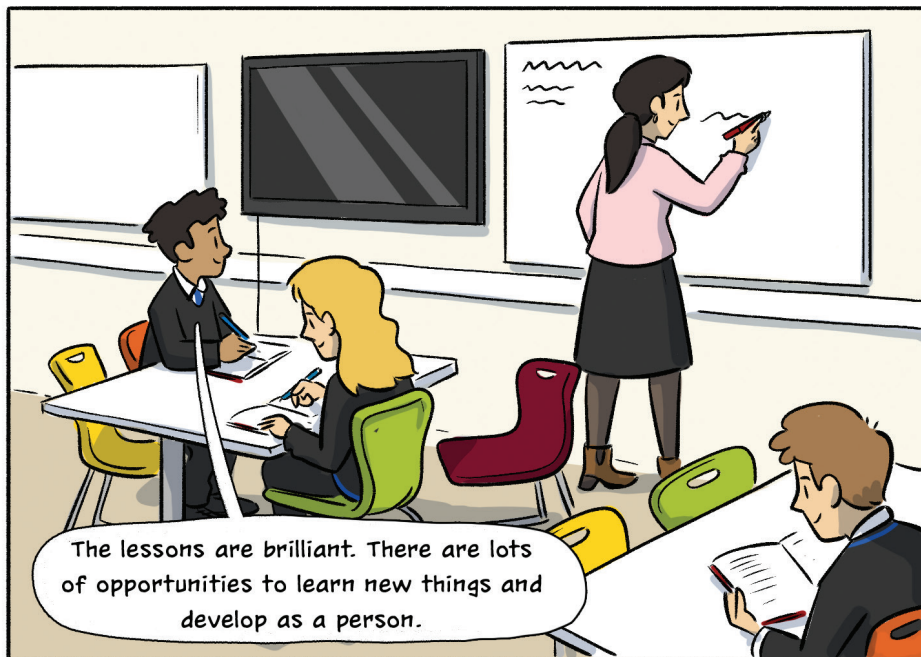
Look forward to having new friends.

Enjoy not having any exams!

It's always good to talk to the staff, if you need to.

It's lots of fun!

What makes Linlithgow Academy so great?



What will I study in S1?

You will study lots of the same subjects you have studied in primary. There will also be some new subjects. You may be worrying about the step up from primary to secondary work, but your teachers will give you lots of support to help with the transition.

The curriculum is split into eight areas, and you will study the following subjects in S1:

Expressive Arts - which includes Art, Food Technology, Music and Drama

Technologies - Business Education, Computing and Design Technology

Social Studies - which includes History, Geography and Modern Studies

Science

Health and Wellbeing - which includes PE and PSE

Religious and Moral Education

Languages - which includes English and Modern Languages

Maths

Questions and Answers

We know that you will have lots of questions about S1. You will also probably have some worries and it is normal to feel a bit nervous about moving up to secondary. Here are some of the most common things we are asked about:

What happens if I am late or lost?

Get everything you need ready the night before and set off for school on time and you will be much less likely to be late for school. But we know that sometimes things will happen which will make you late. If you arrive after lessons have started, make your way to the Well Being Office and they will check you in.

One of the biggest worries for P7 students is getting lost finding their way round. Linlithgow Academy will probably be much bigger than your primary school and it may feel a bit daunting.

So we do lots of things to help you settle into your new school environment.

On your three-day visit in June, we will show you around the school and we will give you a map.

On your first day, and for the first few weeks, you will have S6 Buddies that will help you move from class to class. And at any time, if you are not sure where to go, just ask any teacher or older students and they will be happy to help.

You can also ask for help at the Well Being Office.

You will soon know where everything is. Our S1 students tells us that it only takes a couple of weeks!

What homework will I get?

Homework will regularly be given to you by your teachers. It may take the form of completing work that you have been given in class or you may be asked to go over what you have learnt in class to check you understand it. Your teachers may also give you specific pieces of homework which need to be completed by certain dates.

We share homework via TEAMS and we will show you how it works if you are not already familiar with it.

What happens if I am having problems, or I am worried about anything?

We want you to feel happy and secure at school.

When you feel happy, you will be in the right state of mind to reach your potential - not only academically but in all areas of your school life and in the wider world.

When you have a problem, you may feel alone and lost and not know what to do. It is always best to share your worries and we are here to help!

You can speak to any member of staff in our school, but we recommend that you go to the Well Being Office or your Pupil Support teacher (one per school House) or Pupil Support Team.

The Pupil Support Team are experts in looking after your welfare. As well as checking on your attendance and progress, and giving you advice about options and careers, they can give you help and advice about any worries or problems you are having. They can help with problems in school or outside and they will always listen without judgement.

We also have a team which offers support to any pupils with additional needs.

What is the food like and how do I pay for it?

The canteen is open from 8.00am for Breakfast Club and at break and lunchtime.

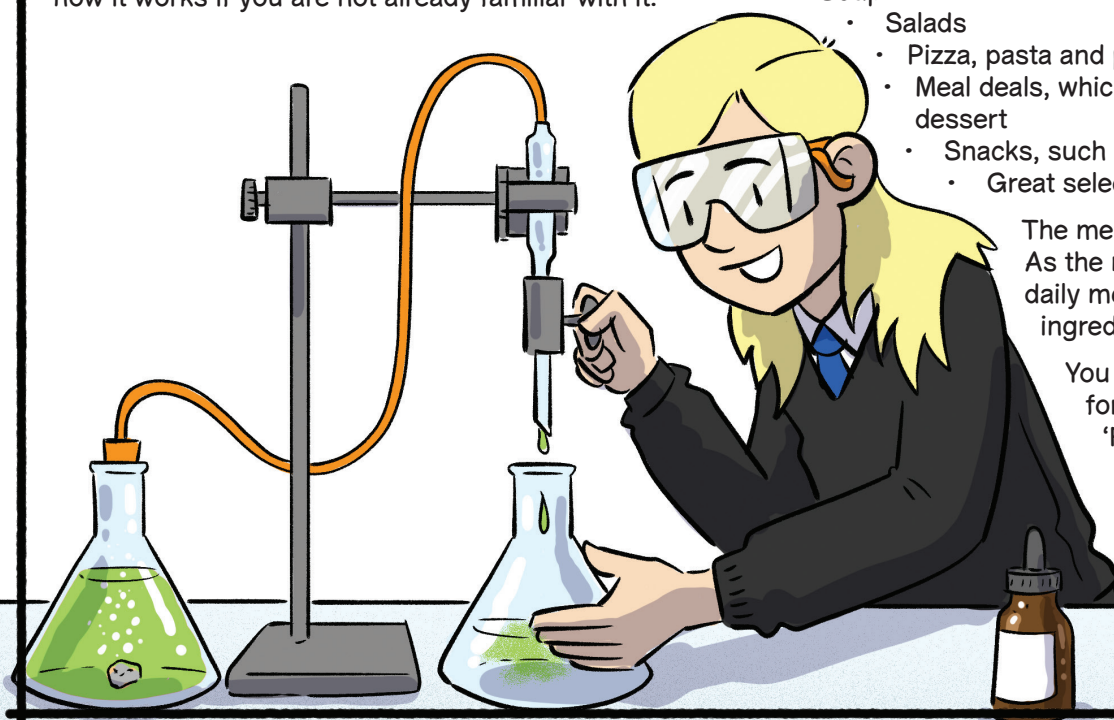
We have a brilliant range of food available and menus are on our website. Current menu choices include:

- Toast, cereals and pancakes at Breakfast Club
- Filled rolls, with vegetarian options
- Soup
 - Salads
 - Pizza, pasta and paninis
 - Meal deals, which include a main course and dessert
 - Snacks, such as cakes and fresh fruit
 - Great selection of hot and cold drinks

The menu will vary from day to day. As the meals are cooked fresh, the daily menu will depend upon the ingredients available.

You can pre-order and pay for your lunch using the 'Fusion' mobile app.

We will give your parents/carers more information about this before you join us.



What clubs and activities are available?

Secondary school is about so much more than what you study in lessons and at Linlithgow Academy we have a brilliant range of clubs, trips and activities on offer.

Our clubs run at lunchtime and after school. What we offer varies according to demand, but here are some examples of clubs we typically run:

Art Club

Chess Club

Drama Club

F1 in Schools

Football

Gymnastics Club

Music

Playwright's Club

School Band

Vocal Group

Badminton Club

Dance Club

Eco Club

Fairtrade Club

Foreign Language Film Club

Jazz Band

Netball Club

Rugby

School Wind Band

Basketball Club

Design and Technology Club

Eco Schools Committee

Fencing

Girls' Hockey Club

LGBTQIA+

Orchestra

School Football Team

Science Club

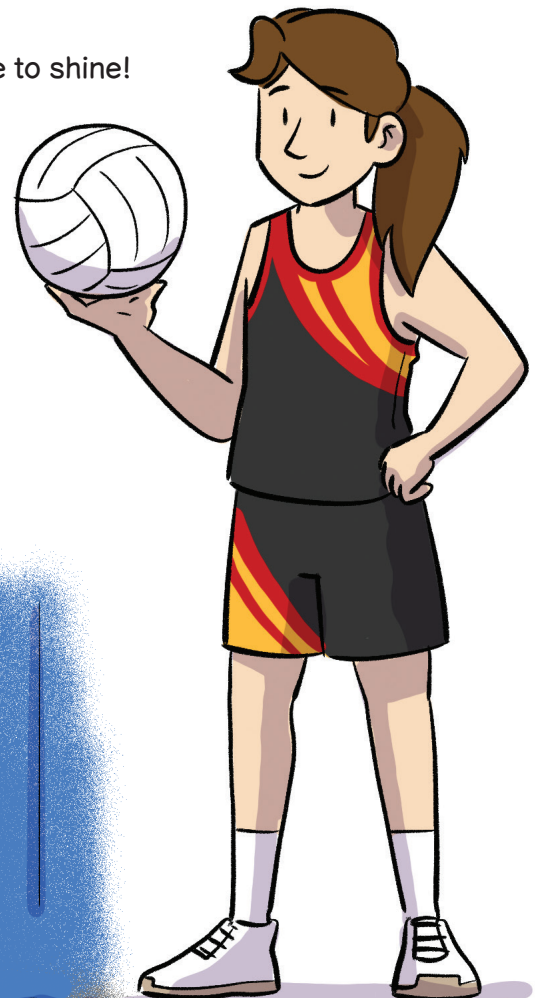
We also offer trips and activities run by some of the curriculum areas. We support initiatives such as 'Anti-bullying', where we have lots of fun activities which raise awareness. You can take part in fundraising activities which help charities but also help you develop interpersonal and organisational skills.

We also have regular school productions which give you the chance to shine!

You can also take part in trips to theatres, museums, galleries, sports events and overseas.

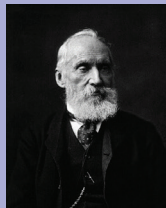
The more you take part, the more you will get from your life at Linlithgow Academy. Our clubs and activities give you the opportunity to pursue something you love already or try something new. They are also a great way to make new friends.

So have a look at what we have on offer and get involved!



Where will I fit in?

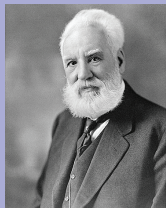
As well as being part of your register class and year group, you will be part of a school House. Your school House is a close community within our school. We have three Houses named after three Scottish inventors who helped transform our world:



Kelvin
named after Lord Kelvin, William Thomson



Watt
named after James Watt



Bell
named after Alexander Graham Bell

How does the House system work?

Each House is led by a Head of House and has about 450 pupils. If you have older siblings who have attended / are attending Linlithgow Academy, we will put you in the same House as them.

You will find out which House and register class you are in before your three-day visit in June. You will stay in the same House while you are with us.

You will have regular House assemblies throughout the year where we will celebrate pupils' achievements. We also hold inter-House competitions. We award the House Trophy for the winning House in our annual Awards Ceremony.

And each House has House Captains who represent their fellow pupils.

What will my school day look like?

A big change from primary is how the school day is structured.

There are seven periods from Monday to Thursday and four on Friday. There will also be breaks during the day.

Each day is divided into different lessons and you will move between classrooms for each lesson.

This is what your weekly timetable looks like in S1:

Monday - Thursday	
8.40-9.40am	P1
9.40-10.30am	P2
10.30-11.20am	P3
11.20-11.35am	Break Time (bells will ring at start and end of Break)
11.35am-12.25pm	P4
12.25-1.15pm	P5
1.15-1.55pm	Lunch Time (bells will ring at start and end of Lunch Time)
1.55-2.45pm	P6
2.45-3.35pm	P7

The timings for Friday are slightly different:

8.40-9.40am	P1
9.40-10.30am	P2
10.30-10.45am	Break Time
10.45-11.35am	P3
11.35am-12.25pm	P4

Room numbers will be included on the map we will give you and on your timetable. Your timetable will give details of your subjects and room numbers.

Don't forget, we will help you find your way round and give you extra support until you are settled in. Everyone at Linlithgow will be happy to help, so if you lose anything, or can't find your way, just ask!

What are our School Vision and Values?



Our school vision is **"Together We Thrive"**.

We follow this in everything we do. It encourages us to promote positive relationships and wellbeing.

For us to thrive and feel included, we encourage everyone at Linlithgow Academy to share the same values of:

- **Kindness**
- **Curiosity**
- **Perseverance**
- **Fairness**

Our expectations are that everyone in school is:

- **Ready (for learning)**
- **Responsible (for themselves, their actions and for making things right)**
- **Respectful (to each other and our environment)**
- **Safe**

At Linlithgow Academy, we support each other to feel healthy, happy and able to learn.

What happens next?

You will find out what register class you are in before your three-day visit in June. During your visit, you will meet your new classmates and some of your teachers. We will send more information about this to your primary school before you visit us.

What if I need more information or have any more questions?

We have lots of information on our website and you can ask questions on your visit.



Linlithgow Academy
Braehead Road, Linlithgow, West Lothian, EH49 6EH, United Kingdom

Tel: 01506 280180

Website: <https://linlithgowacademy.westlothian.org.uk>

Email: wllinlithgow-ac@westlothian.org.uk