

P7 transition 2024

Linlithgow Academy



Introducing Linlithgow Academy

Our Curriculum
& Learning

Supporting
learners

Moving
into S1

Our ethos

Questions



Linlithgow Academy

TOGETHER WE THRIVE

Linlithgow Academy



OUR CORE VALUES

We encourage...



Kindness



Curiosity



Perseverance



Fairness

OUR CORE PURPOSE

Our learning...



Connects us



Sustains us



Empowers us



Inspires us

OUR CORE EXPECTATIONS

We are...



Ready



Responsible



Respectful



Safe



Our
Community

Placing Requests

Linlithgow

Linlithgow Bridge

Low Port

Bridgend

Springfield

Westfield

Torphichen

Winchburgh: Transitional
siblings!



Young People

Senior
Leadership
Team

Our
School

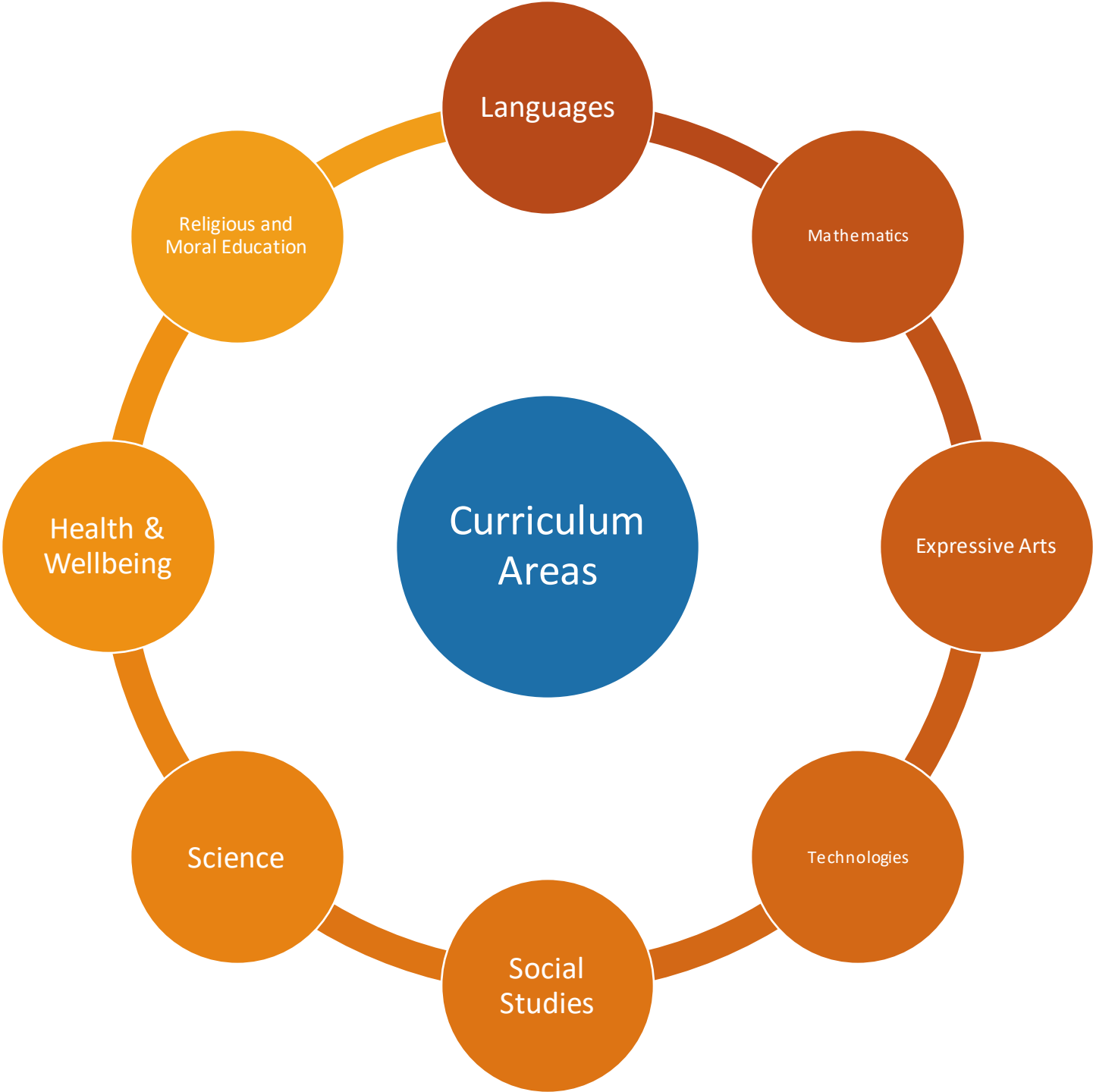
Teaching
staff

Support staff

Admin staff

Facilities
Management
& Catering

Principal
Teachers



S1 subjects and timetable

Non Practical Class	No of periods	Practical Class	No of periods
English	4	Science	3
Maths	5	Food Technology	2
Modern Languages (French)	3	Design Technology	2
PE	2	Computing	1
Integrated Social Studies	3	Art	2
Business Education	1	Music	1
Religious Moral Education	1	Drama	1
PSE	1		

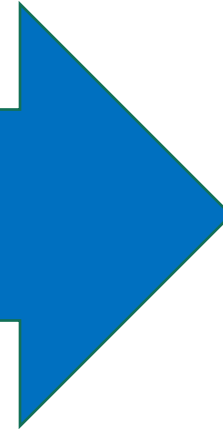
Our BGE S1-S3 Curriculum

	1	2	3	4	5	6	7	8	9	10	11	12	13	14	15	16	17	18	19	20	21	22	23	24	25	26	27	28	29	30	31	32
S1	English				Maths					Core			Social subjects			Science			Modern language		Art	CDT		Music	HE		Business	Computing	Drama			
S2	English				Maths					Core			Social subjects			Science			Modern language		Art	CDT		Music	HE	Business	Computing	Drama				
S3	English				Maths					PE	RE	PSE	Mod Langs		Option 1		Option 2		Option 3		Option 4		Option 5		Option 6							
S4	English				Maths					Core			Option 1			Option 2			Option 3		Option 4											
S5	Option 1				Option 2					Core			Option 3			Option 4			Option 5		Option 6											
S6	Option 1				Option 2					Core			Option 3			Option 4			Minimum 4 options		Minimum 4 options											

The school day



7 classes Mon-Thurs
4 classes on Friday



1st bell 8:36am
Period 1 8:40am

3:35pm/12:25pm



10:20-10:35



1.15pm-1:55

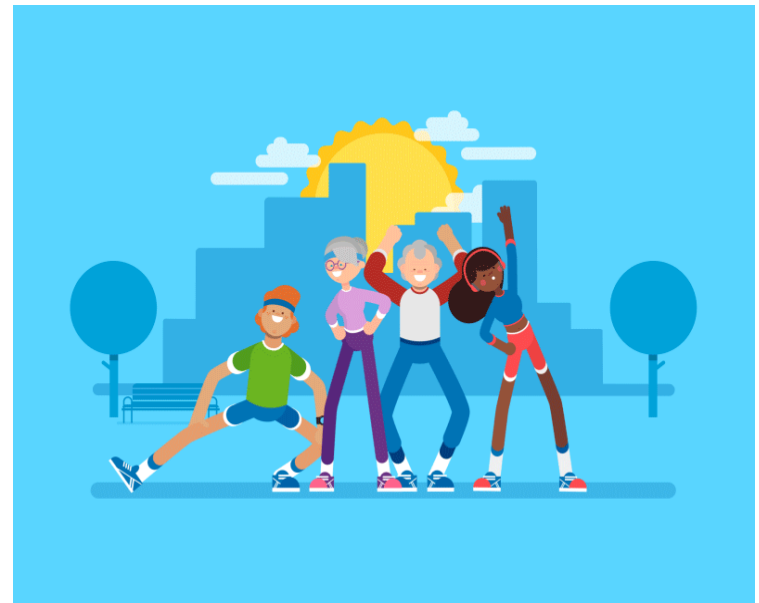
Learning and Teaching

We teach for the development of **understanding, skills and dispositions** that not only enable our pupils to meet the challenges of a future characterised by uncertainty and **increasing complexity**, but that promote their **flourishing** in the broadest sense.

In short, this is what we might term our **core purpose** as a school.

purpose

the reason for which something is done or created; an intention



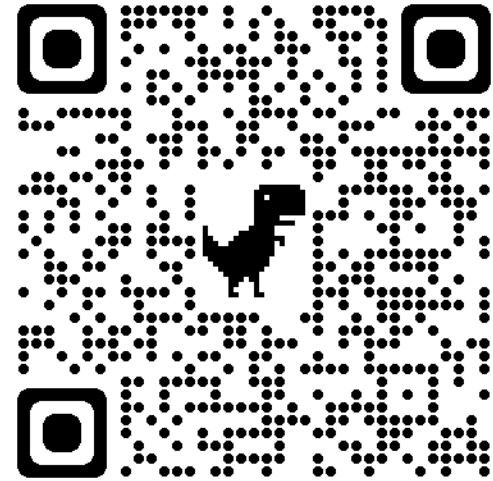
KEY PRIORITY:

LEARNER ENGAGEMENT

Home/Family Learning

In secondary school home learning may involve:

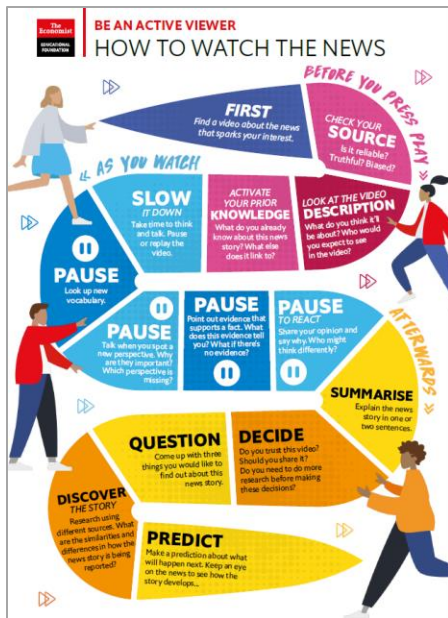
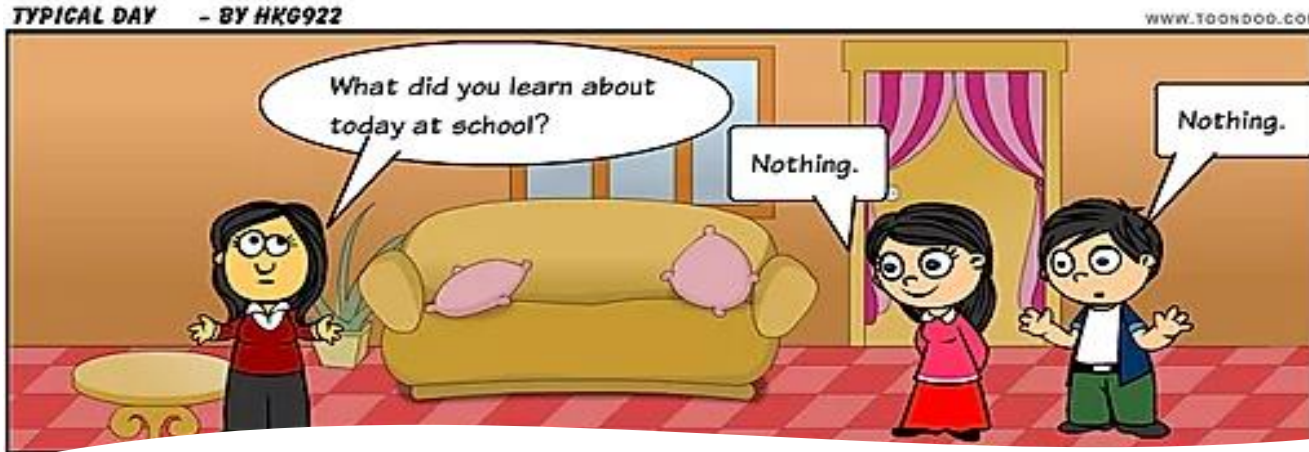
- **Completion of work or revision / consolidation** or
- **Specific pieces of homework** issued by the teacher to be completed for a specific date and then checked/marked by the teacher.
- **Family Learning** opportunities linked to work covered in that particular term



We use **TEAMS** as an online platform for home learning:

- This is part of the Microsoft suite available through Glow and almost all students are now *very familiar* with it.

How can you be involved?



KNOWLEDGE **QUESTIONS**

QUESTIONING THE NEWS

Questions to apply healthy scepticism to the news we see, read and hear

- Who made this?
- Can you tell why it has been created?
- Is this trying to convince us to think a certain way?
- Have you taken someone's word for it?
- Does your own viewpoint make you more or less likely to trust this?
- Can you access the source of the facts or evidence provided?
- Is the author an expert or have they included an expert's opinion?
- Are there a diverse range of viewpoints represented?
- What part of this is fact and what part is opinion?
- Are the facts and evidence correct?
- Are there other facts that contradict or give a broader understanding?
- Whose viewpoint is missing?

Supporting Pupils



getting
it right
for every child



Supporting Pupils



Supporting Pupils

Bell

- Head of House
- Pastoral Support Worker

Kelvin

- Head of House
- Pastoral Support Worker

Watt

- Head of House
- Pastoral Support Worker

- We have three Houses.
- We keep families together to build good relationships between key staff and parents & carers

House Teams

Key contact for
pupils, parents
& carers

Pastoral care

Progress and
Achievement

Attendance &
late coming

Health &
Wellbeing

Targeted
support and
interventions

Transitions &
Making
Choices

Careers &
Positive
Destinations

Partnership
working

Partnership Working

Wellbeing

- School Counsellor (Smile)
- CAMHS
- Children & Young People Team
- Social Work
- Young Carers
- LYPP

Transitions

- More Choices
More Chances
Keyworker
- Skills Development Scotland
- Universities & Colleges
- Employers and Training Providers
- Career Ready

Inclusion

- Educational Psychologist
- Inclusion & Wellbeing Service

Additional Support for Learning Team

Enhanced
Transition

Literacy/Numeracy
Support

In class support

Pupil Passports

Nurture Groups

Assessment
support

Sharing ASN
information

Advice and
collaboration with
teaching staff

Enhanced Support
Provisions

Wellbeing

- Wellbeing Indicators – pupil self-reporting
- Wellbeing Champs
- Wellbeing Hub
- Lunch Club
- Counsellor - Smile
- Mental Health First Aiders
- Wellbeing Board



P7 Transition 2024

Activities to
Support
Transition

“Welcome to S1”
section of website

P7 Open Evening

P7 Tour of school

Enhanced
Transition
events as
appropriate

Pupil Q&A session

Parent Information
Letter

S1 class shared
with pupils

3 day visit –
19/20/21 June
2024

Start: Tuesday 13
August 2024

Communication



www.linlithgowacademy.westlothian.org



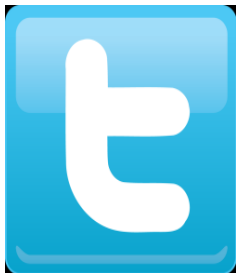
Download now



HT Friday Update



termly



@Linlithgow_Acad



Daily before 10.30am



November/December



October & April

Mobile Phones!

Mobile Phones in Classrooms': Parent /Carer Consultation

We have been gathering professional opinion from teachers across the school on the impact of phones in classrooms. Up until now we have erred on the side that the positives slightly outweigh the negatives, however we are considering whether our current guidelines are still appropriate.

We are now asking parents/carers to take just a couple of minutes to give their views on 'mobile phones in classrooms' by answering just a few questions.

We would really appreciate it if you can do this as the more that respond the clearer the message we have.

Use of mobile phones in classrooms: Parent /carer consultation



A yellow sticky note with a red paperclip at the top. The text is written in a black, sans-serif font.

Things you would like to know
more about

A yellow sticky note with a red paperclip at the top. The text is written in a black, sans-serif font.

Questions you have ...