

# New Academic Session 2023.2024

---



# Welcome to a new academic session!

## Linlithgow Academy School Day Timetable

	P1	P2	P3	S1-S6 Break Time 11.20-11.35am (bells will ring)	P4	P5	Lunch Time 1.15pm - 1.55pm (bells will ring)	P6	P7
<b>Mon</b>	8.40 - 9.40	9.40 - 10.30	10.30 - 11.20		11.35 - 12.25	12.25 - 1.15		1.55 - 2.45	2.45 - 3.35
<b>Tue</b>	8.40 - 9.40	9.40 - 10.30	10.30 - 11.20		11.35 - 12.25	12.25 - 1.15		1.55 - 2.45	2.45 - 3.35
<b>Wed</b>	8.40 - 9.40	9.40 - 10.30	10.30 - 11.20		11.35 - 12.25	12.25 - 1.15		1.55 - 2.45	2.45 - 3.35
<b>Thu</b>	8.40 - 9.40	9.40 - 10.30	10.30 - 11.20		11.35 - 12.25	12.25 - 1.15		1.55 - 2.45	2.45 - 3.35
	P1	P2		P3	P4				
<b>Fri</b>	8.40 - 9.40	9.40 - 10.30	S1-S6 Break 10.30- 10.45	10.45 - 11.35	11.35 - 12.25				

- Some reminders:
- You should have all received your new timetables. If there is an issue with your timetable please see Mrs Bulloch, in the first instance.
- Remember now have a new school day with one interval after period 3. This will take a few days to adjust to this.
- At interval and lunch S5 pupils can use the assembly hall annex area.
- There are now 4 tills open in the dining hall, 2 at the main catering area and 2 now at the smaller servery. Please have patience and work with us as we get into a routine for these new intervals.
- There will be year group assemblies this Thursday. Details of times will be with you soon.

# @ Linlithgow Academy



Our Ethos



Our classrooms



Our Social Spaces



Our Interactions

Our Core Expectations

we are ready

we are responsible

we are respectful

we are safe



## Our S.A.F.E. School Uniform 'Simple, Accessible, Functionable, Equitable'

Our revised school uniform code aims to reflect the majority viewpoints articulated by young people, parents/carers and staff. There is an overwhelming opinion that school uniform is positive, necessary and enhances the ethos of our school community. However, we want to have clear and realistic expectations around the wearing of uniform that improves our consistency of approach, is easy for all to understand, ensures uniform is accessible to everyone and does not distract unnecessary attention away from our core business of learning and teaching. We look to achieve this through a S.A.F.E school uniform expectation code which is set out below.



### School Tie and Shirt

We expect every young person to be able to wear a school tie and shirt (polo shirt if required) each day at school. Shirt colour should be white, black or grey.



### School trousers/skirt/leggings

We expect every young person to be able to wear either black trousers or black skirt, black jeans or black leggings or formal black school shorts to school each day. This offers the widest options available whilst still retaining a smart, functional appearance. Young people not wearing these items will be given a replacement for the school day.



### Jumpers, zipped tops, hoodies

We expect every young person to be able to wear a black or grey jumper/cardigan if required. Jumpers carrying logos of an excessive size will be challenged. Branded school zipper tops will be available and school branded hooded tops (ie school Sports teams) will also be acceptable. Unbranded zipper tops that allow school tie to be seen are acceptable. Unbranded hoodies that do not allow school tie to be seen should not be worn and pupil will be asked to remove.



### Footwear

We expect every young person to be able to wear footwear that is predominantly dark in colour. Style of footwear is a personal choice.



### School Blazer

Our school blazer is a smart addition to our uniform policy and we encourage our young people, especially senior pupils to purchase a blazer. A blazer remains optional.

[Click to edit this text](#)

Our S.A.F.E uniform expectation code allows broad and accessible options for all of our young people giving every opportunity for an acceptable 'workplace' uniform to be worn. The school can offer uniform items to all pupils and families as part of our equity interventions. Temporary infringements to our uniform code will be dealt with sensitively and we will be sympathetic to specific wellbeing issues around the wearing of uniform for identified individuals. If required, we will ask for parental/carer support thereby promoting equity of approach across our school.

# Uniform S.A.F.E. Policy

- Reminder of this expectation
- 86% parents/carers expect this to be followed
- A straightforward dress code to follow

# Linlithgow Academy Monthly Priorities (LAMP)

- **LAMP 1: Remove jackets when in classrooms.**

By removing outside jackets, pupils are making a conscious and visible effort to be present and engaged in the learning process. This small act demonstrates this and sets the tone for a more organised and focused learning experience in the classroom.

- **LAMP 2: Mobile phones away and only used as instructed.**

We limit the use of mobile phones in classrooms to promote a positive and productive learning environment that is free from distractions. By following this school rule we are all demonstrating a conscious and visible effort to improve the learning experience for all in our classrooms.

- **LAMP 3: Focus on corridors and our movements/interactions within them.**

School corridors are often high traffic areas where you spend a significant amount of time, so it's crucial that you feel safe and supported in these spaces. When you feel safe, you are more likely to open up about your emotions and seek support when needed, which can lead to improved mental health outcomes.

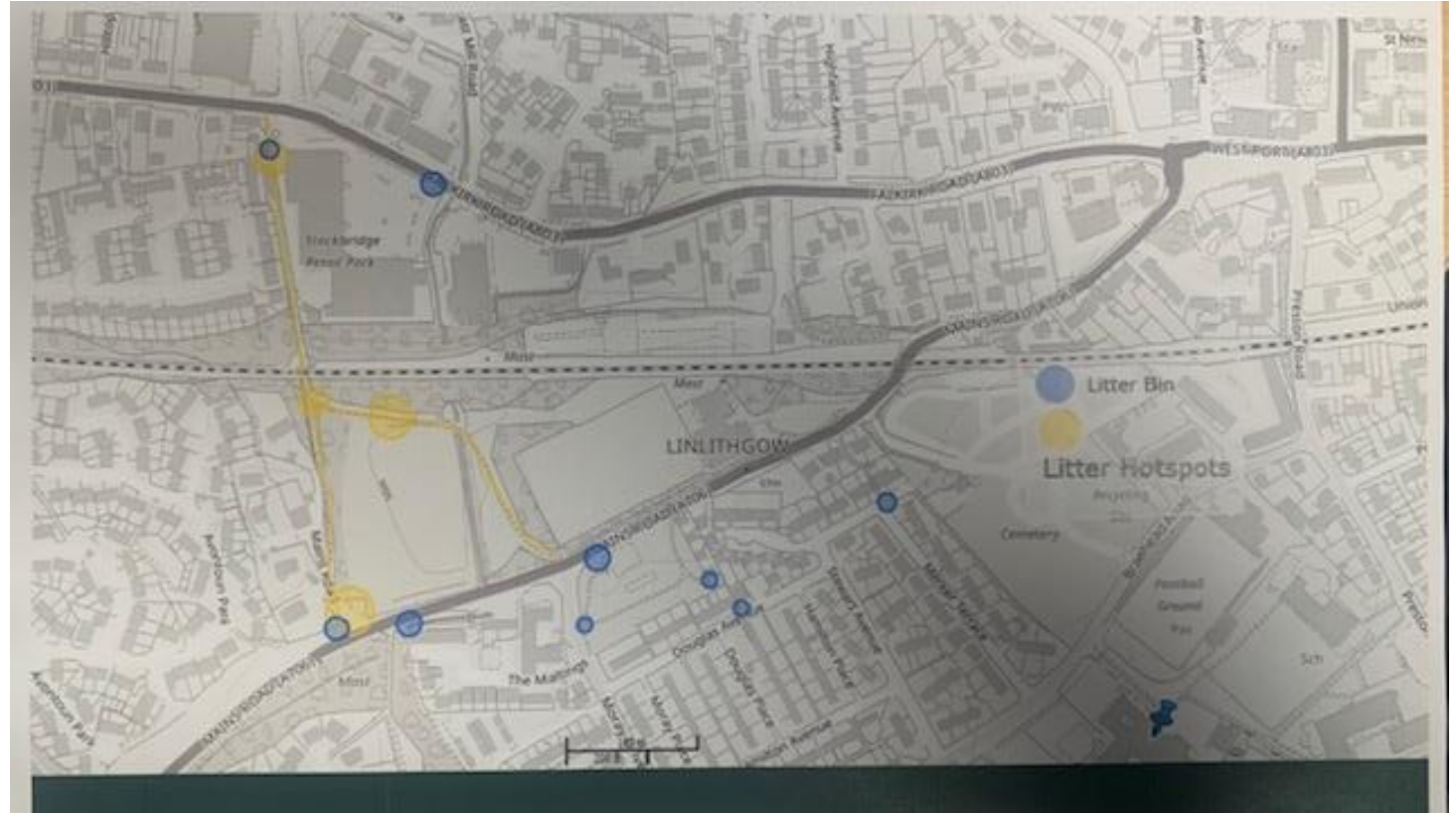
# School Calendar: 'Prelim' Update

---

- School calendar under consultation currently
- Prelims: Extended Assessment window will now take place in December (2 weeks beginning Mon 27th Nov/ Monday 4th Dec)
- English and Maths exams remain in Assembly Hall
- Assessments and grades will all be known by Christmas holidays
- Ensures feedback on progress sooner
- January return: focus on SQA assignments and a clear run to completion of course
- H&W of learners and staff with removal of expectation to study over holidays
- AAA including Immersive Reader/extended time within department. Reader/Scribe elsewhere but moving to more digital solutions for this.
- Assessment Calendar introduced giving overview across all subjects



# Community Links: Litter Hotspots

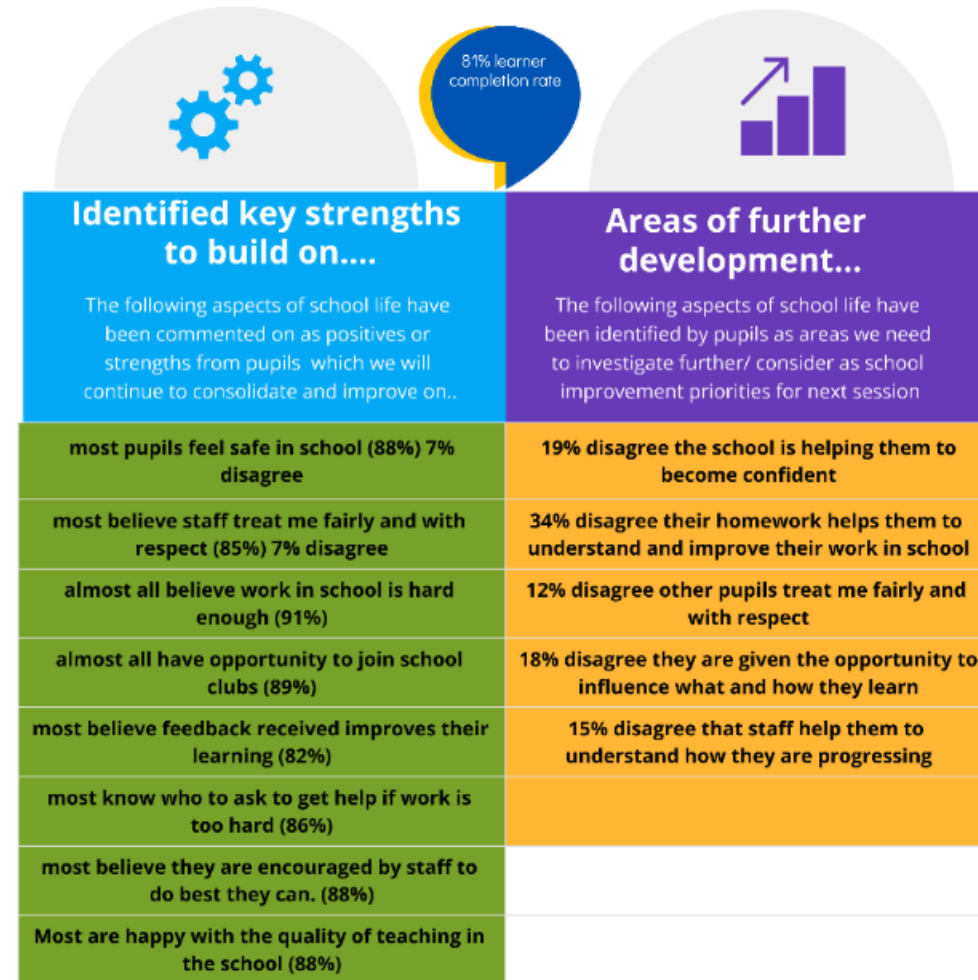


## Student End of Academic Year Survey Analysis 2022.2023

almost all	means	over 90%
most	means	75% to 90%
majority	means	50% to 74%
less than half	means	15% to 49%
few	means	up to 15%

# Pupil Survey April 2023

- School Improvement Plan
- Faculty Improvement Teams
- Pupil Parliament
- H&W Committees





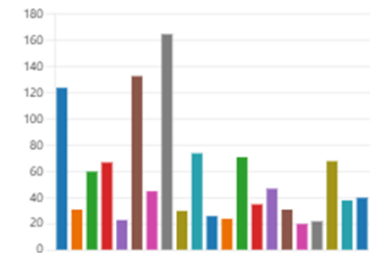
# Refreshing Our School Vision and Values

- From an consultation process involving pupils, staff, and parents/carers, we have gathered valuable insights that provide a clear direction for our school's aspirations. It is evident that our community desires a school that prioritises wellbeing, establishes clear expectations, and fosters high aspirations for all members.
- With this shared vision and based on all returns received we need 3 elements to be visible or implied in any final statement:
  - **A focus on togetherness/community/inclusion either implied or visible**
  - **A focus on wellbeing/agreed values either implied or visible**
  - **A focus on learning either implied or visible**

Firstly, please read down the list of personal values/character strengths before then choosing a **maximum of 3** that you think are most important to you and you would like to see for our agreed school values. Once you have chosen, click 'submit'.

[More Details](#)

creativity	124
curiosity	31
bravery/ courage	60
honesty	67
compassion	23
kindness	133
enthusiasm	45
respect	165
leadership	30
fairness	74
love of learning	26
hope	24
teamwork	71
ambition	35
resilience	47
belonging	31
integrity	20
aspiration	22
determination	68
tolerance	38
Other	40





@



#### Our Core Values

Curiosity

Perseverance

Kindness

Fairness

#### Our Core Purpose

our learning connects us

our learning sustains us

our learning empowers us

our learning inspires us

#### Our Core Expectations

we are ready

we are responsible

we are respectful

we are safe

# LINLITHGOW ACADEMY




**EVERYONE MATTERS HERE**

@

<b>Our Core Values</b>	<b>Our Core Purpose</b>	<b>Our Core Expectations</b>
Curiosity	our learning connects us	we are ready
Perseverance	our learning sustains us	we are responsible
Kindness	our learning empowers us	we are respectful
Fairness	our learning inspires us	we are safe

**LINLITHGOW ACADEMY**



**KIND HEARTS, CREATIVE MINDS,  
PURPOSEFUL LIVES**

@

<b>Our Core Values</b>	<b>Our Core Purpose</b>	<b>Our Core Expectations</b>
Curiosity	our learning connects us	we are ready
Perseverance	our learning sustains us	we are responsible
Kindness	our learning empowers us	we are respectful
Fairness	our learning inspires us	we are safe

**LINLITHGOW ACADEMY**



**TOGETHER WE THRIVE**

@

<b>Our Core Values</b>	<b>Our Core Purpose</b>	<b>Our Core Rules</b>
Curiosity	our learning connects us	we are ready
Perseverance	our learning sustains us	we are responsible
Kindness	our learning empowers us	we are respectful
Fairness	our learning inspires us	we are safe

**LINLITHGOW ACADEMY**

Moving steadily to  
a vote!

- **Our Vision Statement: Final Consultation**
  - Our core purpose, our values and our expectations have been confirmed through our consultation activities.
  - Our final vision statement required 3 elements to be visible or implied in any final statement:
  - A focus on togetherness/community/inclusion either implied or visible
    - A focus on wellbeing/agreed values either implied or visible
    - A focus on learning either implied or visible



# School Vision Consultation

