

P7 transition 2023

Linlithgow Academy



Introducing Linlithgow Academy

Our Curriculum &
Learning

Supporting
learners

Moving
into
S1

Our
ethos

Questions

Our Vision and Values









S1 subjects and timetable

Non Practical Class	No of periods	Practical Class	No of periods
English	5	Science	3
Maths	4	Food Technology	2
Modern Languages (French)	3	Design Technology	2
PE	2	Computing	1
Integrated Social Studies	3	Art	2
Business Education	1	Music	1
Religious Moral Education	1	Drama	1
PSE	1		

Our BGE S1-S3 Curriculum

	1	2	3	4	5	6	7	8	9	10	11	12	13	14	15	16	17	18	19	20	21	22	23	24	25	26	27	28	29	30	31	32								
S1	English				Maths				Core				Social subjects				Science				Modern languages				Art		CDT		Music		Computing		PE		PE		Business		Drama	
									PE	RE	PSE																													
S2	English				Maths				Core				Social subjects				Science				Modern languages				PE		Art		CDT		Music		Drama		Computing		Business			
									PE	RE	PSE																													
S3	English				Maths				PE	RE	PSE	Mod Langs		Option 1			Option 2			Option 3			Option 4			Option 5			Option 6											

The school day



1st bell 8:36am
Period 1 8:40am

7 classes Mon–Thurs
4 classes on Friday



3:35pm/12:25pm



10:20–10:35



1.15pm–1:55

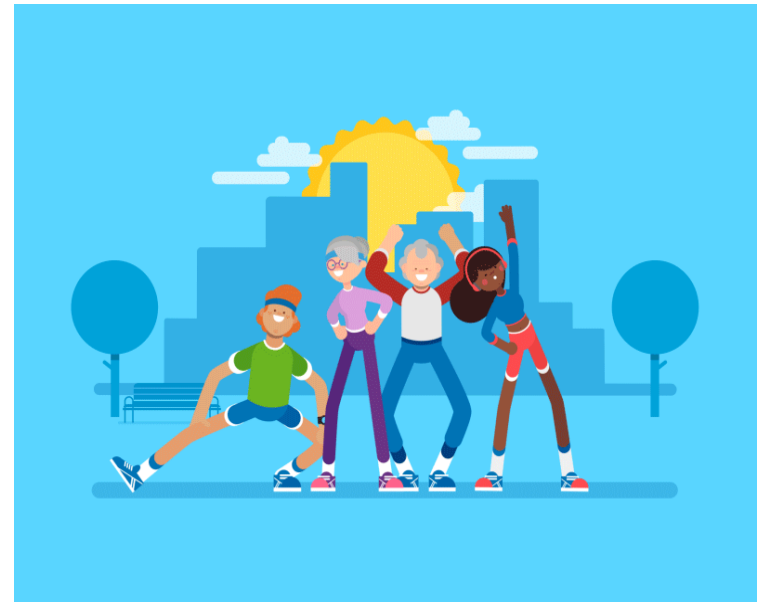
Learning and Teaching

We teach for the development of **understanding, skills** and **dispositions** that not only enable our pupils to meet the challenges of a future characterised by uncertainty and **increasing complexity**, but that promote their **flourishing** in the broadest sense.

In short, this is what we might term our **core purpose** as a school.

purpose

the reason for which something is done or created; an intention



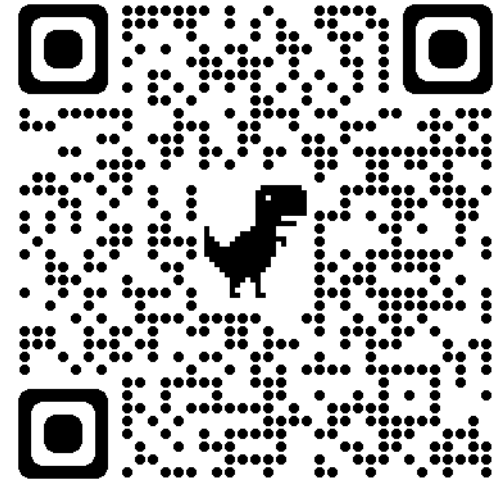
KEY PRIORITY:

LEARNER ENGAGEMENT

Home/Family Learning

In secondary school home learning may involve:

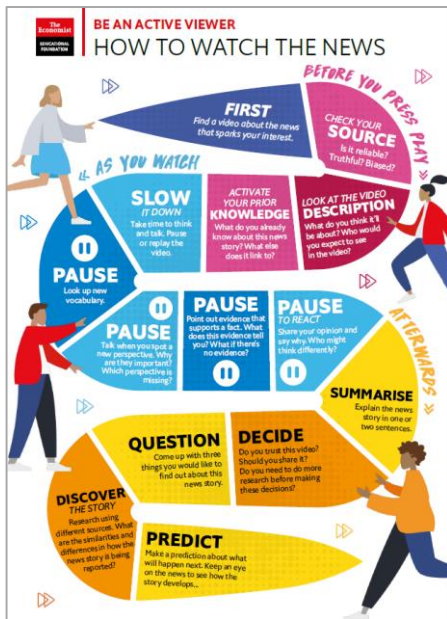
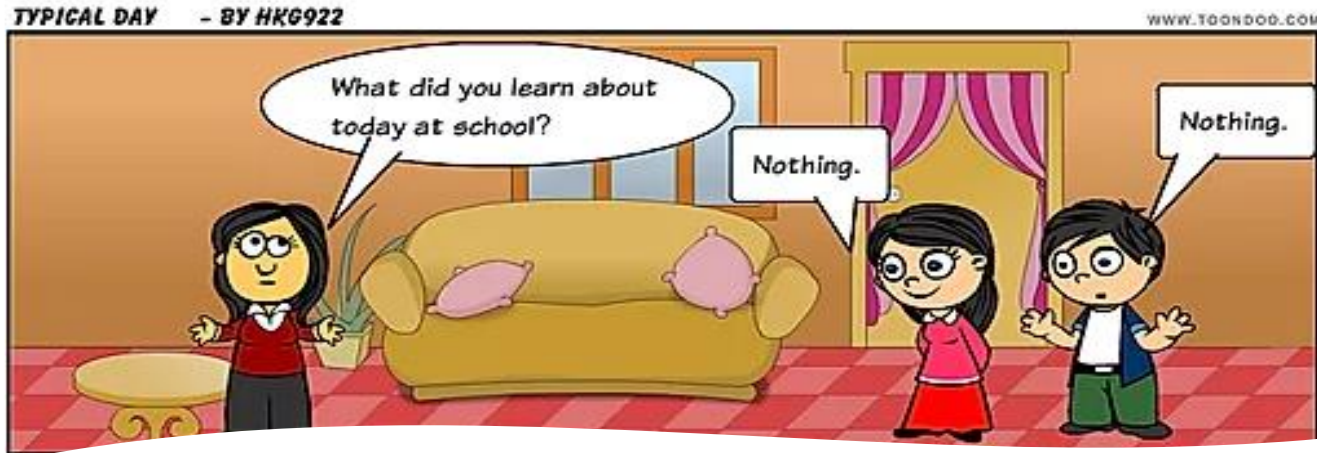
- **Completion of work or revision / consolidation** or
- **Specific pieces of homework** issued by the teacher to be completed for a specific date and then checked/marked by the teacher.



We use **TEAMS** as an online platform for home learning:

- This is part of the Microsoft suite available through Glow and almost all students are now *very familiar* with it.

How can you be involved?



KNOWLEDGE
QUESTIONS

QUESTIONING THE NEWS

Questions to apply healthy scepticism to the news we see, read and hear

- Who made this?
- Can you tell why it has been created?
- Is this trying to convince us to think a certain way?
- Have you taken someone's word for it?
- Does your own viewpoint make you more or less likely to trust this?
- Can you access the source of the facts or evidence provided?
- Is the author an expert or have they included an expert's opinion?
- Are there a diverse range of viewpoints represented?
- What part of this is fact and what part is opinion?
- Are the facts and evidence correct?
- Are there other facts that contradict or give a broader understanding?
- Whose viewpoint is missing?

Supporting Pupils

We talk
wellbeing!

getting
it right
for every child



Supporting Pupils



Supporting Pupils

Bell

- Head of House
- Pastoral Support Worker

Kelvin

- Head of House
- Pastoral Support Worker

Watt

- Head of House
- Pastoral Support Worker

Ø We have three Houses.

Ø We keep families together to build good relationships between key staff and parents & carers

House Teams

Key contact for
pupils, parents
& carers

Pastoral care

Progress and
Achievement

Attendance &
late coming

Health &
Wellbeing

Targeted
support and
interventions

Transitions &
Making
Choices

Careers &
Positive
Destinations

Partnership
working

Partnership Working

Wellbeing

- School Counsellor (Smile)
- CAMHS
- Children & Young People Team
- Social Work

Transitions

- More Choices
More Chances
Keyworker
- Skills Development Scotland
- Universities & Coll

Inclusion

- Educational Psychologist
- Inclusion & Wellbeing Service

Additional Support for Learning Team

Enhanced
Transition

Literacy/Nu
meracy
Support

In class
support

Pupil
Passports

Nurture
Groups
Advice and

Assessment
support

Sharing
ASN
information

collaboration
with
teaching

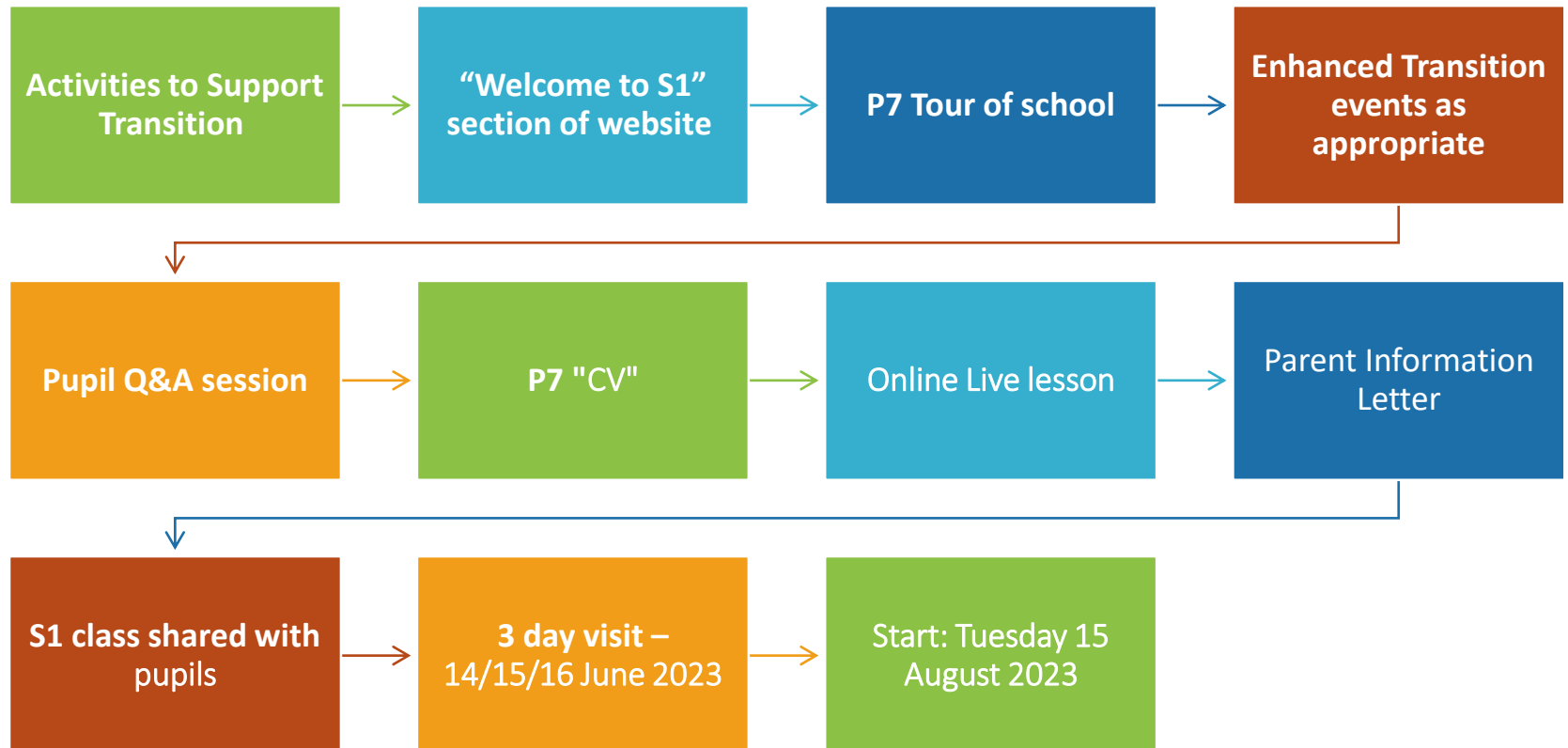
Enhanced
Support
Provisions

Wellbeing

- Wellbeing Indicators – pupil self-reporting
- Wellbeing Champs
- “Cosy Corner” in Nurture Area
- Lunch Club
- Counsellor - Smile
- Mental Health First Aiders
- Wellbeing Board



P7 Transition 2023



Communication



www.linlithgowacademy.westlothian.org



Download now



HT Friday Update



termly



@Linlithgow_
Acad




Daily before 10.30am



November/December



October & April

A yellow rectangular sticky note is shown at an angle, with a red paperclip attached to its top edge. The text is written in a black, monospaced font.

Things you would
like to know more
about

A yellow rectangular sticky note is shown at an angle, with a red paperclip attached to its top edge. The text is written in a black, monospaced font.

Questions you have ...