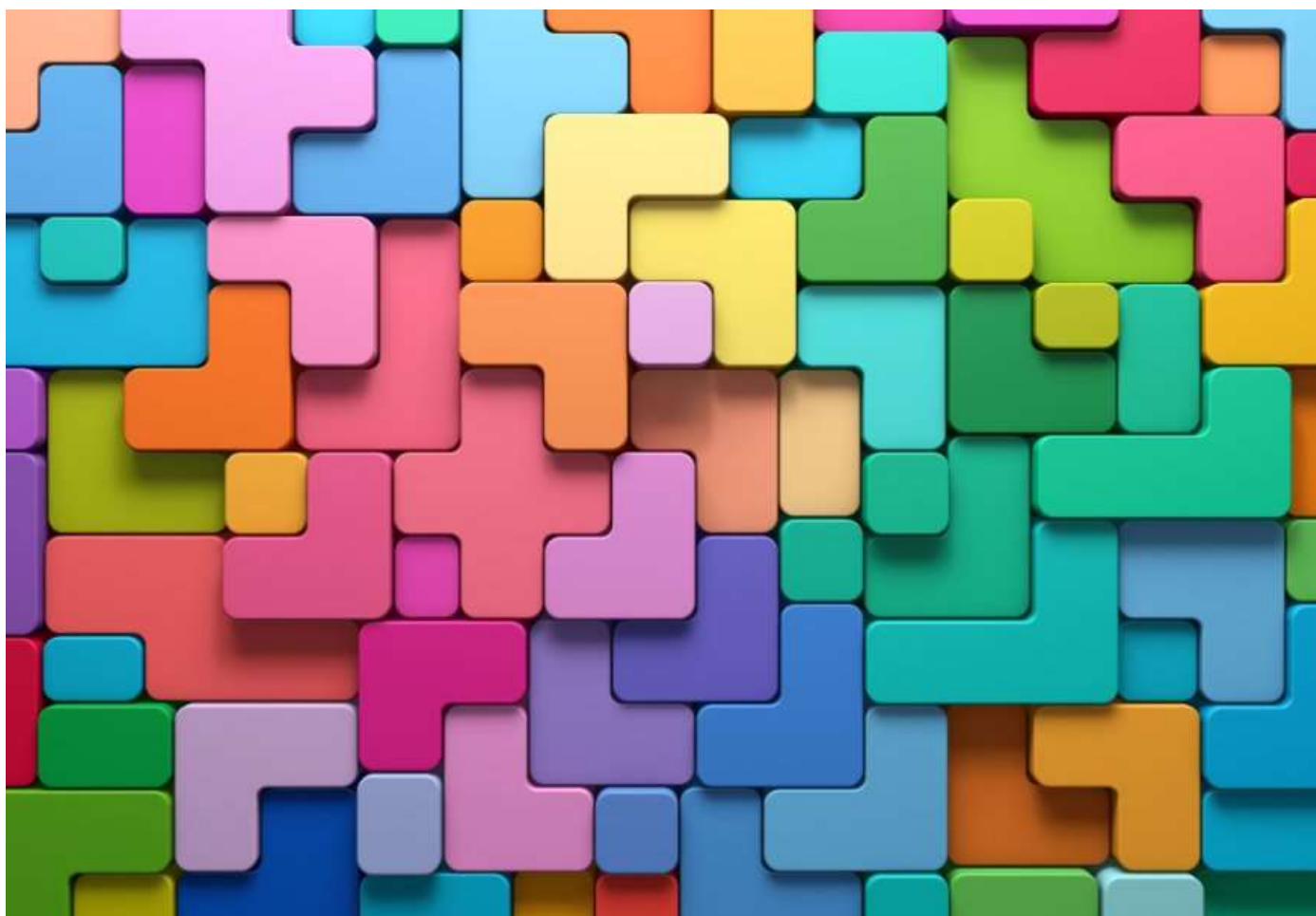


Promoting Positive Relationships in West Lothian Education Establishments

Policy
2025



Background:

This policy provides vision and guidance for all educational establishments in promoting positive relationships for all children and young people. Everyone involved in the education of West Lothian's children and young people are working towards excellence and equity for every learner.

Our commitment to the presumption of mainstream ensures that those learners with additional support needs are enabled to thrive as part of their class, their school and their wider community. We continue to make sure that all of our children and young people are included and can participate and achieve their full potential.

Our inclusive approach affords all children and young people the opportunity to be a part of a community, boosting their emotional wellbeing and aiding the development of social skills. This approach celebrates diversity and allows all children and young people to develop an understanding and recognition of differences. This contributes to the West Lothian vision of the development of inclusive, empathetic communities and directly relates to the Corporate Priorities for the council.



Getting It Right For Every Child (GIRFEC):

In West Lothian, the majority of children and young people flourish within our schools through our implementation of the Getting It Right For Every Child (GIRFEC) framework, the creative delivery of the Curriculum for Excellence, and our approach to building positive relationships. Through combined multi-agency approaches, the aim is that all West Lothian children and young people become successful learners, confident individuals, responsible citizens and effective contributors. In West Lothian, we use the Continuum of Support to plan and support all of our learners. This framework facilitates the use of the national GIRFEC assessment process and provides guidance on how to meet the changing needs of our learners.

Vision, Values and Aims:

Education Services aligns with the above statements and aims to support the learners and staff of West Lothian schools and communities with a range of approaches that can be taken to enhance the development of better relationships promoting better behaviour. This in turn leads to better learning for all. Each school within West Lothian will have a contextualised Positive Relationships Policy underpinned by this policy and guidance documents.

As part of the guiding principles in ensuring and promoting positive outcomes for all our learners we also maintain a focus on the National Improvement Framework priorities:

- Placing the human rights and needs of every child and young person at the centre of education
- Improvement in children and young people's health and wellbeing
- Closing the attainment gap between the most and least disadvantaged children and



young people

- Improvement in skills and sustained, positive school-leaver destinations for all young people
- Improvement in attainment, particularly in literacy and numeracy.

These priorities are integral to our planning and support for children and young people and are key to our approach to building and maintaining positive relationships.

Positive Relationships:

At times, some children and young people will be faced with difficult life circumstances and adverse childhood experiences which can result in presenting challenges to their families, schools and communities. At these times, behaviour can be used as a way of communicating distress. Research shows that by focusing on building positive relationships and by setting a positive and inclusive ethos at all times, many issues can be avoided and any negative effects greatly diminished.

Strong and positive relationships are fundamental to all of the outlined procedures and supports contained within this guidance. These relationships are most effective when they are developed within a positive ethos and a climate of mutual respect and trust based on shared values across communities. Inclusion, engagement and involvement are the key principles underpinning our work in ensuring this. The following summarises the values underpinning our approach:

- mutual respect between children, young people and adults using trauma informed approaches.
- high expectations for pupils' learning and achievement
- inclusion, engagement and involvement of all learners
- trust and tolerance between young people and between young people and adults
- all children and young people are valued irrespective of their needs, behaviour or background; and
- ensure every child / young person has the same opportunity to succeed

Legislative framework:

This Promoting Positive Relationships policy aligns with the Corporate priority of Raising Educational Attainment and should be read in conjunction with: The Raising Educational Attainment Strategy 2023-28.

The policy is fully informed by key legislation relating to children and young people:

- [Education \(Scotland\) Act 1980](#)
- [Standards in Scotland's Schools Act 2000](#)
- [Additional Support for Learning Act \(Scotland\) \(2004\)](#)
- [GIRFEC National Practice Model](#)
- [National Improvement Framework](#)
- [Keeping the Promise implementation plan](#)
- [Developing a Trauma Informed Workforce](#)
- [UNCRC](#)
- [Relationships and Behaviour in Schools: National Action Plan 2024-2027](#)
- Included, Engaged and Involved guidance [Part 1](#), [Part 2](#), and [Part 3](#) This policy works in conjunction with the associated guidance document for schools. Specific



information is provided to assist with contextualising the policy at school level. Detailed information is provided to support schools to implement the policy into practice on specific topics such as Continuum of Support, attendance, exclusions, planning for care experienced children and young people, parental engagement, anti-bullying approaches and details of procedural supports for schools. The operational guidance will be updated as emerging good practice occurs.

Education Services are committed to:

- Strengthening the capacity of all schools, early years providers and partner services to provide appropriate and proportionate support to all West Lothian children at the right time in their education.
- Promoting and supporting effective multi agency working to improve outcomes for children and young people of West Lothian.
- Supporting families to play a key role in the education and wellbeing of their children and young people.
- Developing the inclusive culture across our communities to allow every child the opportunity to be educated in their locality school.
- Supporting all Education Services employees by building confidence through the provision of clear guidance.

